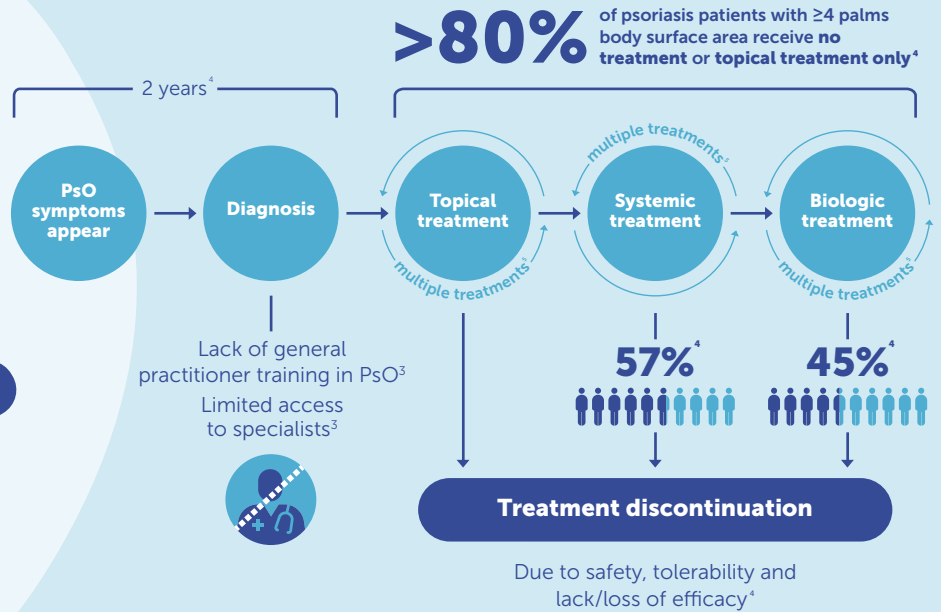


## Psoriasis (PsO) is a complex disease with many barriers to optimal care

Psoriasis is a common, chronic disease that has a **negative physical, psychological and social burden** on patients, yet many wait several years to receive effective treatment.<sup>1,2,3</sup>



Epicensus is a pan-European consensus initiative with the long-term aim of elevating the standard of care (SoC) for patients



### Objectives

**Multidisciplinary insight generation and consensus** with key stakeholders dedicated to diagnosis, care, monitoring, access and patient-related outcomes...

... to **drive multistakeholder action** on enhancing the delivery of the future of medicine and elevating the standard of care.



## Epicensus Programme: Concept in a nutshell

**STEP 1**




Insights questionnaire & analysis of feedback


Obtain insights from relevant **multidisciplinary stakeholders** to gain a comprehensive understanding of the current SoC.

**21** Clinicians **12** Payers **9** Patient representatives  
from **8 European markets** complete this step


**STEP 2**



Identification of consensus council



Delphi surveys (three rounds)



Consensus council meetings

Select a cohort of experts to form a pan-European **consensus council**, who engage in a series of **Delphi surveys\***, in order to **define gaps and consensus**.

**10** Clinicians **3** Payers **5** Patient representatives  
from **8 European markets** participate in 3 Delphi surveys and 2 discursive meetings

**STEP 3**



Drive multistakeholder action to improve SoC



Regional & country-level dissemination & implementation



Consensus publication

The consensus council drives the development of a **consensus manuscript** to highlight where, in the patient pathway, **patients would benefit from an elevation in SoC**. Innovative activities are then explored at regional and country levels to **disseminate and implement findings**.

\*Delphi process: A blinded, systematic, egalitarian method, accepted in clinical literature as being well-suited to developing clinical recommendations and consensus statements.

Epicensus has been designed in an adaptable way, meaning its core principles can be applied to other disease areas to investigate and address elevation in SoC through multidisciplinary engagement.

1. Strober, et al. *Dermatol Ther (Heidelb)*. 2019;9(1):5-18.  
2. Armstrong, et al. *J Eur Acad Dermatol Venereol*. 2018;32:2200-2207.  
3. WHO, Global report on PSORIASIS, 2016. Available at: [https://apps.who.int/iris/bitstream/handle/10665/204417/9789241565189\\_eng.pdf.psoriasis?sequence=1](https://apps.who.int/iris/bitstream/handle/10665/204417/9789241565189_eng.pdf.psoriasis?sequence=1)

4. Lebwohl, et al. *J Am Acad Dermatol*. 2014;70(5):871-881.  
5. Kerdel and Zaiac. *Dermatol Ther*. 2015;28(6):390-403.